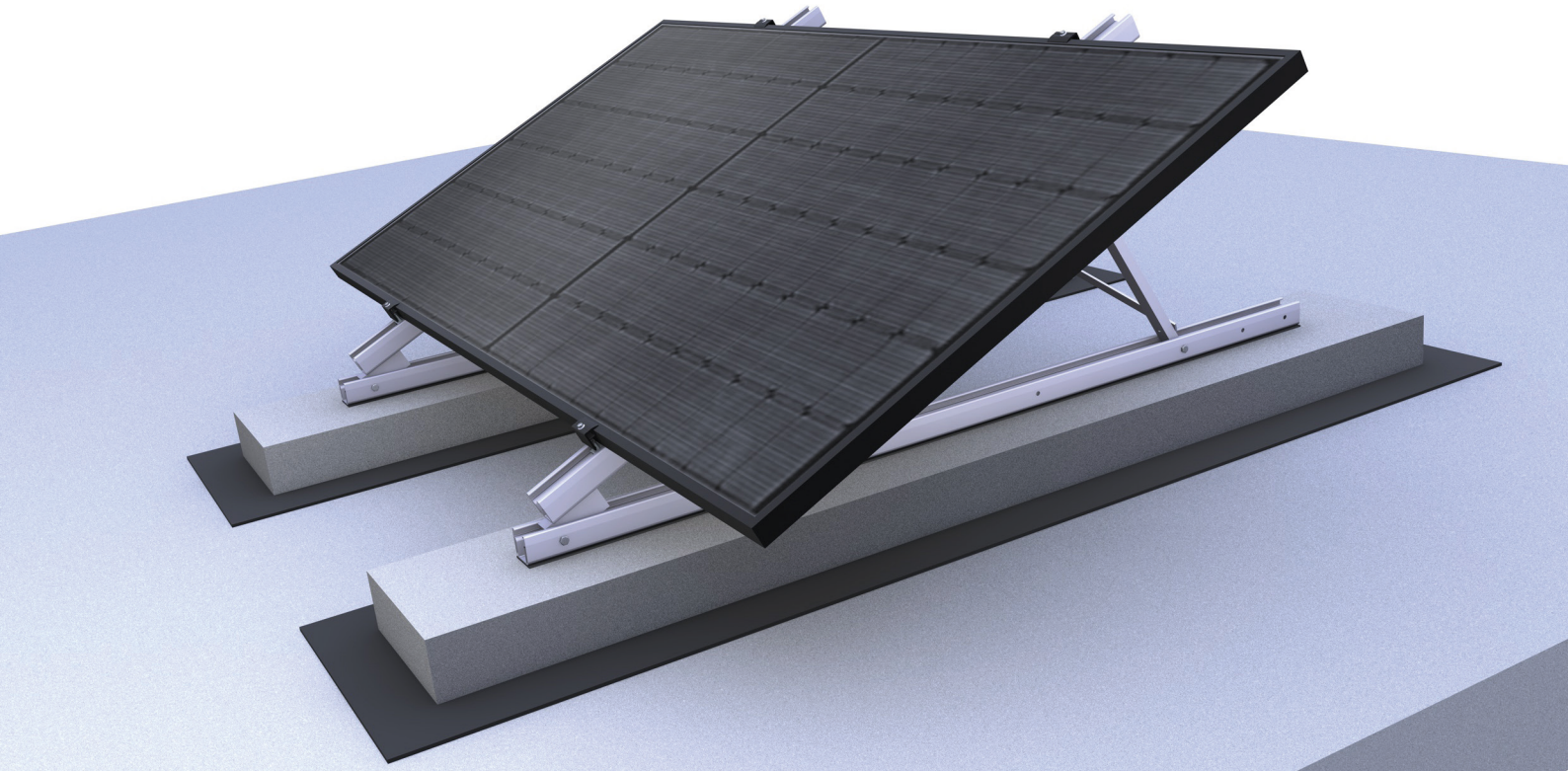
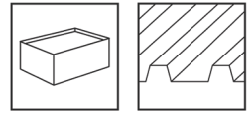


## Elevation system : For angles of 15-20-25-30°

Single-level clamp system with horizontal modules



### Simple, stable and flexible

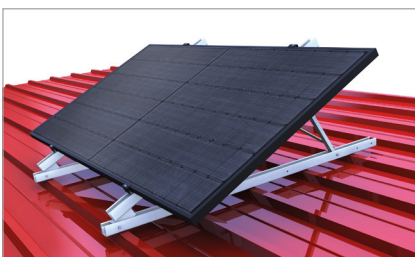
- Triangle can be adjusted to different inclinations: 15-20-25-30°.
- Load centred on the base rail
- Clamps for 30-42mm module frames
- Rail compatible with M10 or M12 fixing screws
- Load distributing brace for triangles

### Product variants

- 18 key lock nuts available, for metric M10 or M12
- Clamps available in black or aluminium anodised colour

## YOUR BENEFITS

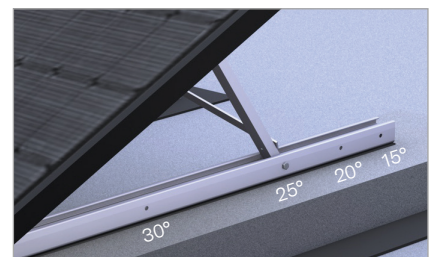
- Triangle for four elevation angles
- C-rail doubles as a cable duct
- Same fixing clamps for all novotegra coplanar systems
- Pre-assembled triangle, quick installation



Trapezoidal sheet metal lifting system

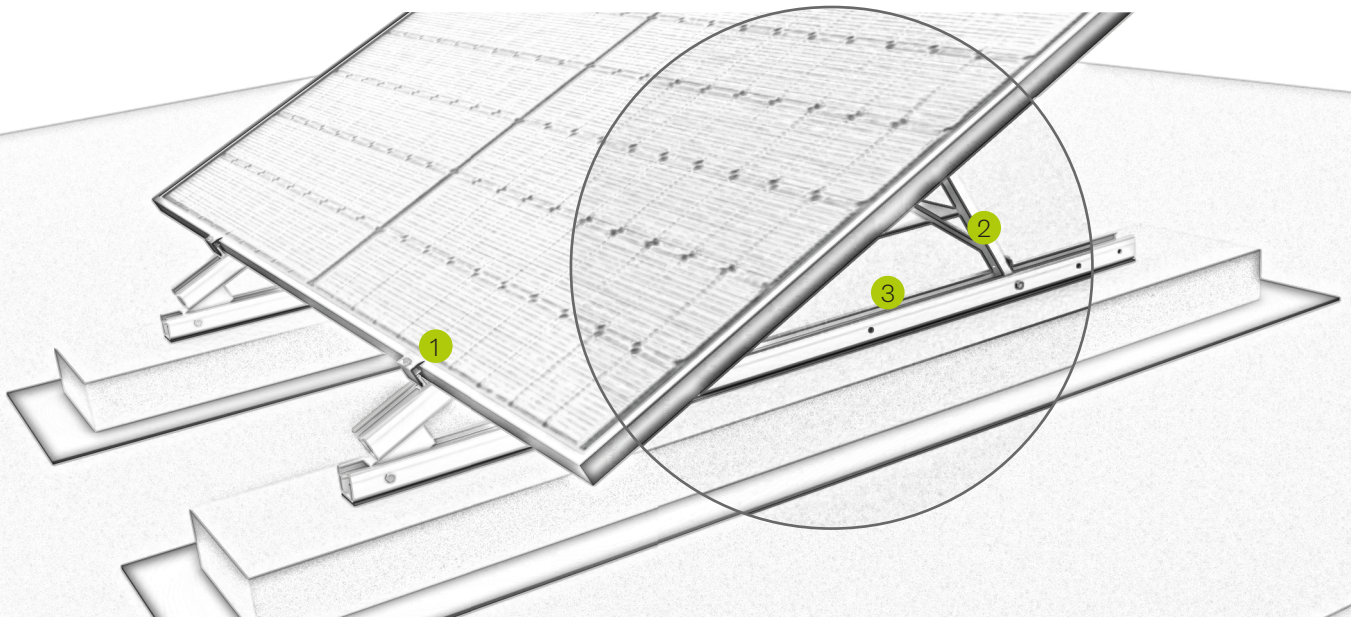


Load distribution bracket



Triangles for four elevation angles

## novotegra : Elevation system



### Description

1

#### Middle or end clamp

- For 30-42 mm and 43-52 mm module frame
- Easy to assemble thanks to the locking function

2

#### Triangles

- Selectable between four elevation angles
- Available in different lengths

3

#### C-rail

- Available in different thicknesses and lengths
- Resistant to footprints during assembly



2-level connector for C-rail



Module anti-slip protection

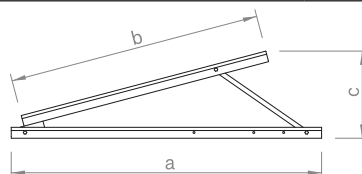
Video



novotegra GmbH  
Eisenbahnstraße 150 | 72072 Tübingen | Deutschland  
Tel. +49 7071 98987-0, info@novotegra.com  
www.novotegra.com

We reserve the right to errors or changes.  
Version: October 2022 / TP

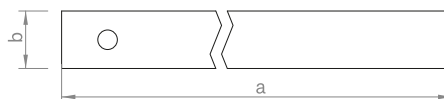
## Triangle



Triangles in different lengths with four different angles of inclination, for pitched roofs and flat roofs. Fixing system with C-rail clamps.

Art.-nr.	Description	a in mm	b in mm	c in mm	Material
03-000931	Triangle 15/20/25/30° 1100	1350	1100	285–550	Alu / A2SS
03-000932	Triangle 15/20/25/30° 1300	1600	1300	336–650	Alu / A2SS
03-000933	Triangle 15/20/25/30° 1500	1900	1500	388–750	Alu / A2SS

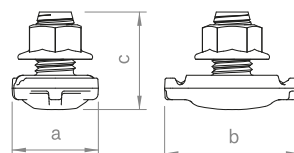
## Load distribution brace set



Brace for load distribution between triangles. Set consists of 25x4x1800mm aluminium bar and two 8AF self-drilling screws with hexagonal head.

Art.-nr.	Description	a in mm	b in mm	c in mm	Material
03-000685	Load distribution brace set	1800	25		Alu / A2SS

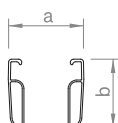
## 2-level connector for C-rail



Connector for C-rail fastening to create a cross rail connection, locking nut M14 with hexagon head SW 18.

Art.-nr.	Description	a in mm	b in mm	c in mm	Material
03-000226	2-level connector for C-rail	30	46	34	Alu / V2A

## C-rail



Mounting rail with cable gland, usable as module support rail for clamping systems or as cross rail, in various dimensions for different spans and loads depending on static requirements, rail base with slotted holes 75 x 15 mm in increments of 100 mm for easy mounting from above, optionally available in white or black anodised.

Art.-nr.	Description	a in mm	b in mm	c in mm	Material
03-001441	C-rail 47-2 2,40 m	52	47		Alu

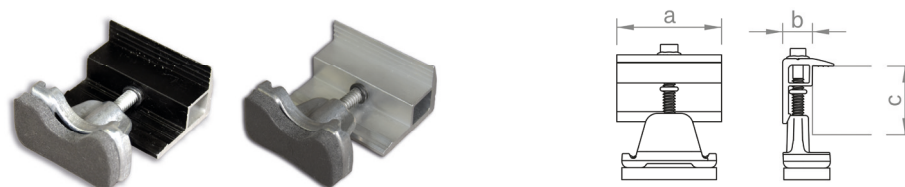
### C-rail middle clamp



Central clamp for module mounting on C-rail or C-N-rail, easy to mount thanks to the locking function. External hexagonal clamping screw SW 8. For frame heights 30 - 42 mm or 43 - 52 mm, optionally available in white or black anodised.

Art.-nr.	Description	a in mm	b in mm	c in mm	Material
03-001345	Set intermediate clamp 30-42 C	52	11,4	30-42	Alu / V2A / PE
03-001346	Set intermediate clamp 30-42 C black	52	11,4	30-42	Alu / V2A / PE

### End rail clamp C



End clamp for fixing the modules to the C-rail or C-N-rail, easy to install thanks to the locking function. External hexagonal clamping screw SW 8. For frame heights 30 - 42 mm or 43 - 52 mm, optionally available in white or black anodised.

Art.-nr.	Description	a in mm	b in mm	c in mm	Material
03-001236	End clamp set 30-42 C	52	14	30-42	Alu / V2A / PE
03-001237	End clamp set 30-42 C black	52	14	30-42	Alu / V2A / PE

### Note:

This is the responsibility of the installer:

- Check the support capacity of the installation surface
- Calculation of required ballast and/or checking of fixation
- Correct execution of the installation (e.g. protective layer between the ballast and the deck).